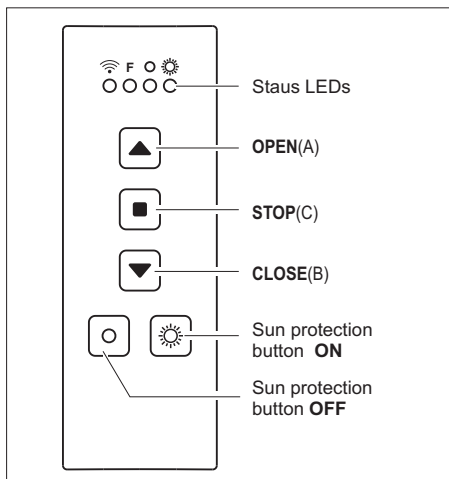


Model



RT37E5001-01 868,3 MHz

Scope of Delivery

Status transmitter RT37 incl. battery, mounting plate, fixed set, operating instructions

Technical Data

Frequency: 868,30 MHz
 Modulation: FSK
 Coding: Easywave A/B/C
 EasywaveSensor
 Power supply: 1x 3-V-Battery, CR 2032
 Operation Check: LED
 Degree of protection: IP 54
 Operating temperature: -20°C to +60°C
 Range: free field: approx. 150 m
 buildings: approx. 30 m
 Dimensions: 38 x 109 x 14 mm
 Weight: 37 g (incl. mounting plate)

Safety advice



Before using the device, carefully read through the operating instructions!

Note also the operating instructions of the radio control(s)!

Keep children away from the device!

Check the device regularly to ensure that it is in a ready to transmit status!

Have faulty devices checked by the manufacturer!

Do not make any unauthorized alterations or modifications to the device!

Intended use

The Status transmitter RT37 may only be used to Easywave radio controls RCM04 und RCJ05.

The manufacturer shall not be liable for any damage caused by improper or non-intended use!

Function

The Status transmitter RT37 is a bidirectional radio transmitter. The awning can be manually operated using the OPEN/STOP/CLOSE direction buttons.

The status buttons can be used to request the current status of the sunlight function from the control and to switch it on and off.

Start up

The radio transmitter and the radio control must be connected to each other. Register the transmission code with the device.

1. Activate the programming mode in the control. For this read the operating instructions supplied with the radio controls.

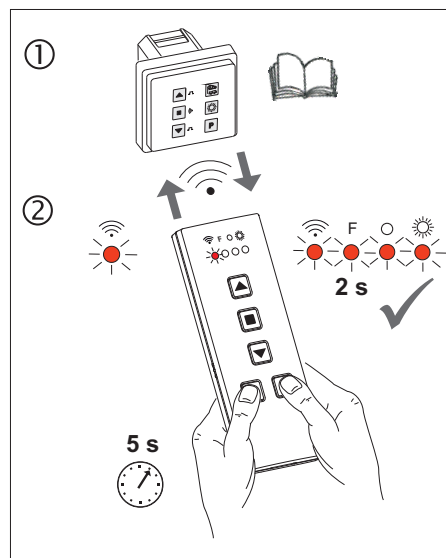
2. Press the **ON** and **OFF** status buttons at the same time and keep them pressed. The transmission code from the transmitter will be transferred to the control, and LED F will light up.

The control will then transfer its code to the transmitter. The programming procedure is completed when all LEDs light up for approx. 2 seconds.

Let go of the buttons. All operating functions are now active.



Each RT37 can only programme on control code.

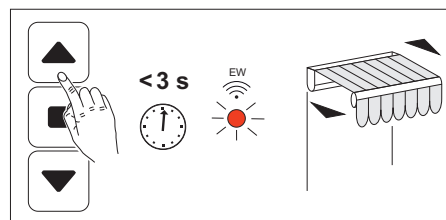


Using the transmitter

Controlling the awning

To transmit a command for operating the awning, press one of the **OPEN/STOP/CLOSED** direction buttons. LED F will light up.

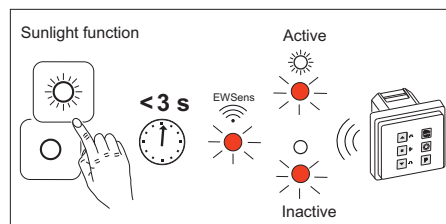
The awning moves in the desired direction or can be stopped.



Checking the sunlight function

You can use the transmitter to check whether the sunlight function is activated or not.

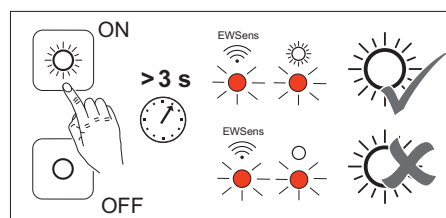
Briefly press either the **ON** or **OFF** status button. If the LED sun is lit up, the sunlight function is activated. If the LED circle is lit up, the function is deactivated.



Switching the sunlight function on and off

The sunlight function can be turned on or off selectively with RT37.

Press the **ON** status button for more than 3 seconds to turn this function on or press the **OFF** status button to turn this function off.



Changing the battery

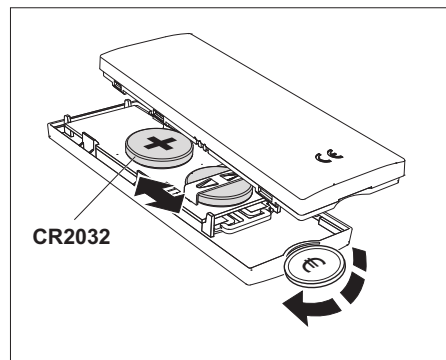
The transmitter has a battery control function which checks the battery capacity during transmission.

If the LED flashes during transmission, the battery capacity is low and must be replaced.

1. Insert a small coin in the groove on the underside of the transmitter. Turn the coin until it is diagonal and gently push the two parts of the housing apart.

2. Change the battery. Only use CR2032 type batteries.

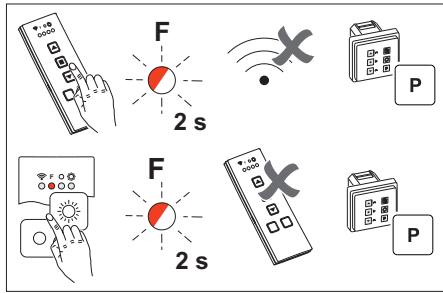
Ensure that the polarity is correct!



Troubleshooting

LED **F** flashes for 2 seconds when a button is pressed:

- Error during transmission of the wireless signal. Re-programme the code. Check that the wireless network is available.
- The transmitter has not yet been programmed in the control and the status request is activated. Programme the code.

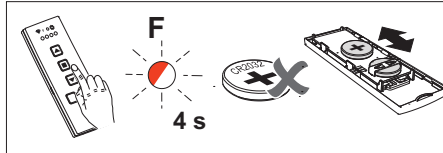


LED **F** flashes for 4 seconds when a button is pressed:

- The battery is almost empty: Change the battery!

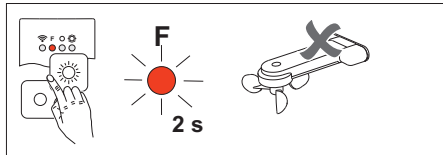
LEDs do not light up:

- Check the transmitter battery.



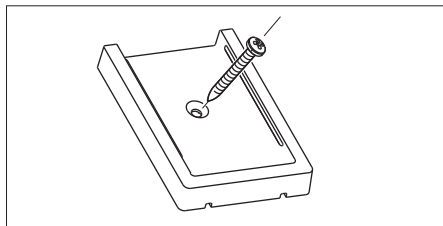
LED **F** flashes for 2 seconds when a button is pressed:

- A Weather sensor fault was reported by the control. Check the sensor.



Fit accessories

Attach the wall bracket at the desired place of installation using an adhesive pad or screws.



Disposal

Waste electrical products and batteries should not be disposed of with household waste!

Dispose of the waste product via a collection point for electronic scrap or via your specialist dealer.



Dispose of used batteries in a recycling bin for batteries or via the specialist trade.



Put the packaging material into the recycling bins for cardboard, paper and plastics.

Warranty

Within the statutory warranty period we undertake to rectify free of charge by repair or replacement any product defects arising from material or production faults.

Any unauthorized tampering with, or modifications to, the product shall render this warranty null and void.

Conformity

This product conforms to the basic requirements of the R&TTE Directive 1999/5/EC.



For use in: EU/CH/FL/IS/N

The Declaration of Conformity can be found on the Internet at: www.eldat.de.

Customer service

If, despite correct handling, faults or malfunctions occur or if the product was damaged, please contact the company at the address below:

ELDAT GmbH

Im Gewerbepark 14
15711 Königs Wusterhausen
Germany

Phone: + 49 (0) 33 75 / 90 37-0

Fax: + 49 (0) 33 75 / 90 37-90

Internet: www.eldat.de

E-Mail: info@eldat.de