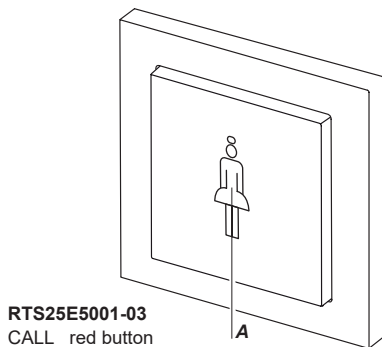
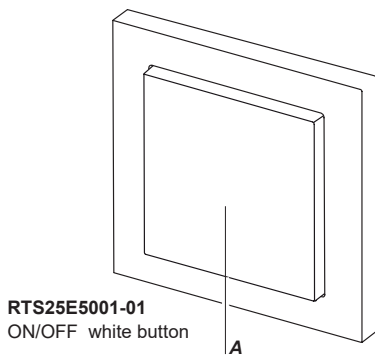


Models



Function

The RTS25 is a capacitive proximity switch for surface mounting in dry rooms. By slight approach or short touch of the button surface the Easywave code A is transmitted and the connected Easywave receivers are switched.

The sensor wall switch is delivered including a cover frame. Other cover frames with a cutout size of 55x55 mm can also be used as an option.

Start-Up (figure 1)

1. Insert the batteries (see chapter „Change batteries“).
2. Screw or stick the mounting plate to the installation site with screws and dowels or the adhesive pads.
3. Place the cover frame onto the mounting plate.
4. Snap the transmission module to the catches on top and bottom. **The arrow on the back of the transmission module must point upwards!**
5. Program the transmission code into the receiver. Please read the operating instructions supplied with the receivers.

Caution: Make sure there is no interference with the wireless connection. Do not mount the device in a distribution box, in metal casings, in direct proximity to large metal objects, on the floor or close to it.

Change batteries (figure 2)

1. Lever off the transmission module from the mounting plate.
2. Replace the batteries. Only use batteries of the type CR2032. **Make sure the polarity is correct. The positive pole must be visible!**
3. Install the transmission module back onto the catches of the mounting plate. **The arrow on the back of the transmission module must point upwards!**

Note: The coding of the transmitter is preserved even if there is no voltage supply. You do not need to program the code in the receivers again after a battery change.

Trouble Shooting

If the receiver does not reacted to the transmitter:

- Change the batteries.
- Check that the wireless connection at the installation site is not impaired between the transmitter and the receiver.
- Reprogram the transmission code into the receiver.
- Other wireless devices using the same frequency and working in direct proximity may interfere with the device.

Disposal

Waste electrical products and batteries not be disposed of with household waste!

Dispose of the waste product via a collection point for electronic scrap or via your specialist dealer.

Dispose of used batteries in a recycling bin for batteries or via the specialist trade. Put the packaging material into the recycling bins for cardboard, paper and plastics.



Warranty

Within the statutory warranty period we undertake to rectify free of charge by repair or replacement any product defects arising from material or production faults.

Any unauthorized tampering with, or modifications to, the product shall render this warranty null and void.

Conformity



Hereby, ELDAT EaS GmbH declares that the radio equipment type RTS25 is in compliance with Directive 2014/53/EU.

The full text of the EU declaration of conformity is available at the following internet address: www.eldat.de

Service

If the device does not work properly despite proper handling or in case of damage, please contact the manufacturer or your retailer.

ELDAT EaS GmbH
Schmiedestraße 2 | 15745 Wildau
Germany
Phone: +49 3375 9037-310
Internet: www.eldat.de
E-Mail: info@eldat.de

Technical Details

Frequency:	868.30 MHz
Radiated power:	0.14 mW
Modulation:	FSK
Coding:	Easywave (A)
Transm. duration:	max. 1 second
Power supply:	2x 3-V-batteries, CR2032
Current consumption	
standby current:	approx. 16 µA
transm. current:	approx. 12 mA
Operating temp.:	-20 °C to +50 °C
Range:	free-field: approx. 150 m buildings: approx. 30 m
Dimensions	
mounting plate:	71/71/1.8 mm
cover frame:	80/80/9.4 mm
transm. module:	55/55/8.2 mm
Weight:	42.0 g incl. batteries and cover frame

Scope of Delivery

Transmission module, 2 batteries CR2032, mounting plate, adhesive pad, cover frame, operating manual

Intended Use

Only use the Sensor wall switch RTS25 in dry indoor rooms to switch Easywave receivers. The manufacturer will not be liable for damage caused by improper or inappropriate use.

Safety Advice

- ⚠ Before installing the device, carefully read through this operating manual
- Also note the operating instructions of the receivers!
- The Sensor Wall Switch should only be operated within sight of the devices to be controlled! Otherwise persons could be placed in danger!
- Do not make any unauthorized alterations or modifications to the Sensor Wall Switch!
- Have faulty Sensor Wall Switches checked by the manufacturer!
- Keep the batteries out of the reach of children!

Figure 2

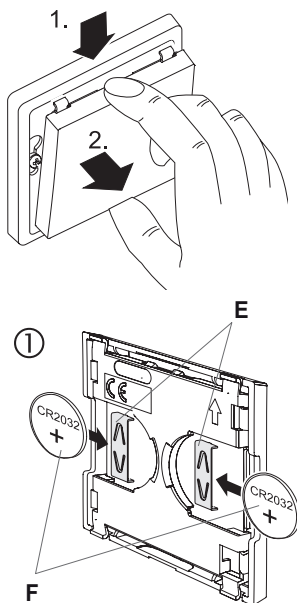
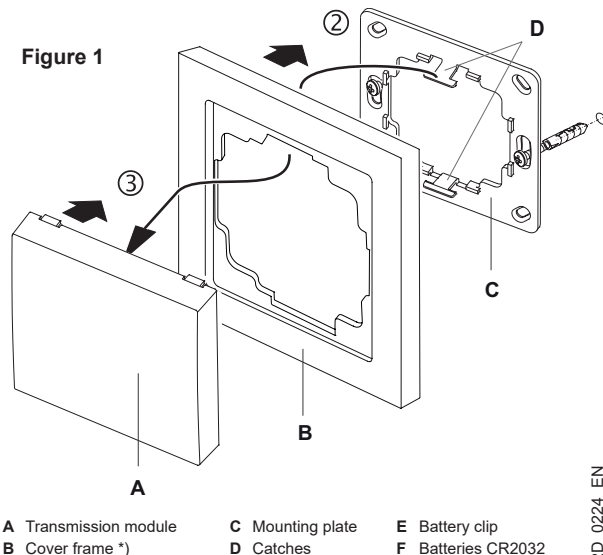


Figure 1



- A Transmission module
- B Cover frame *)
- C Mounting plate
- D Catches
- E Battery clip
- F Batteries CR2032

*) If necessary, the cover frame can be replaced with frames of other manufacturers with a cutout size of 55x55 mm.